



Date

GIS @ OTI for GISMO AppFair 2022

Chris Rado

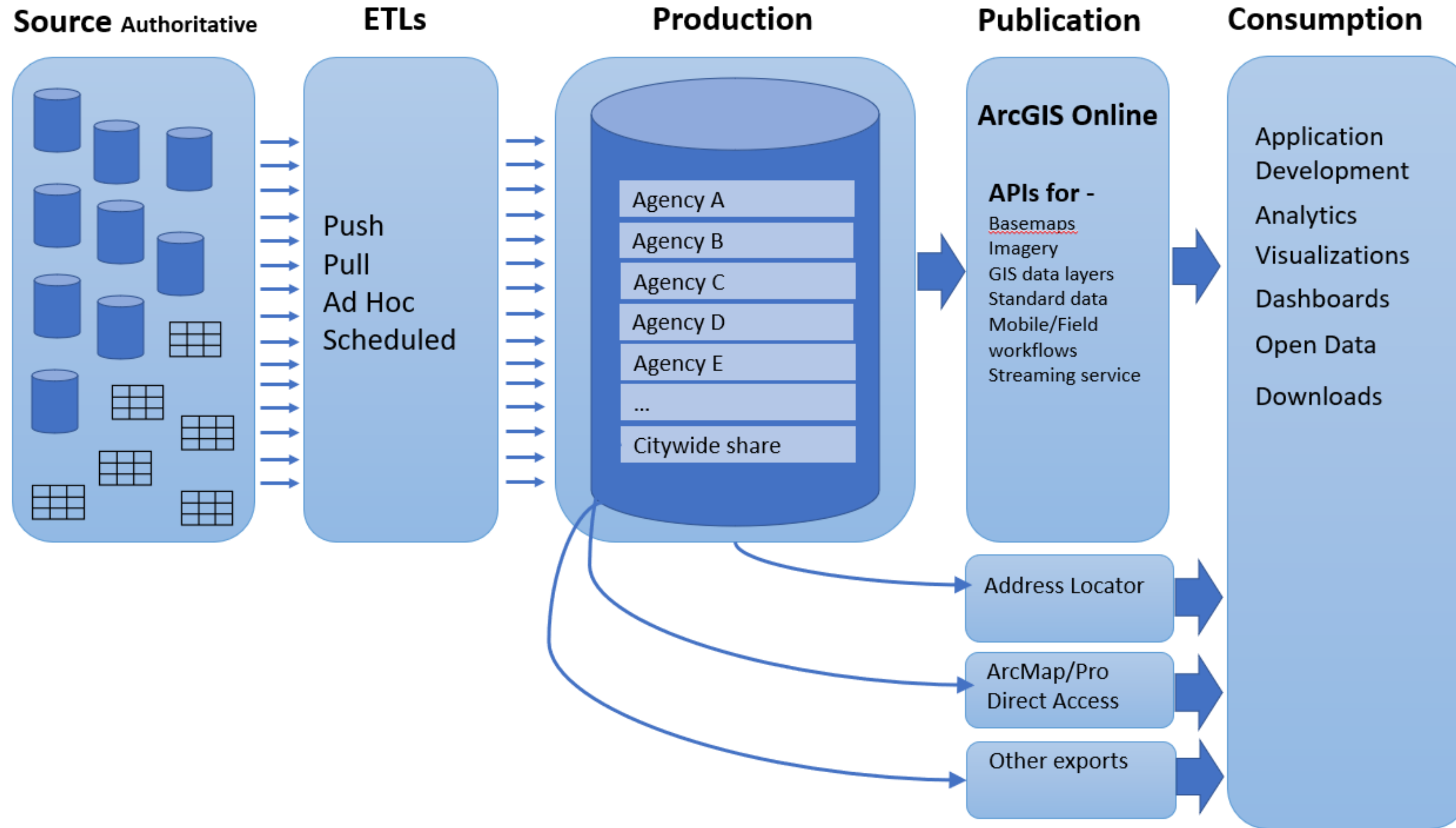
Director of GIS

New York City Office of Technology & Innovation (OTI)

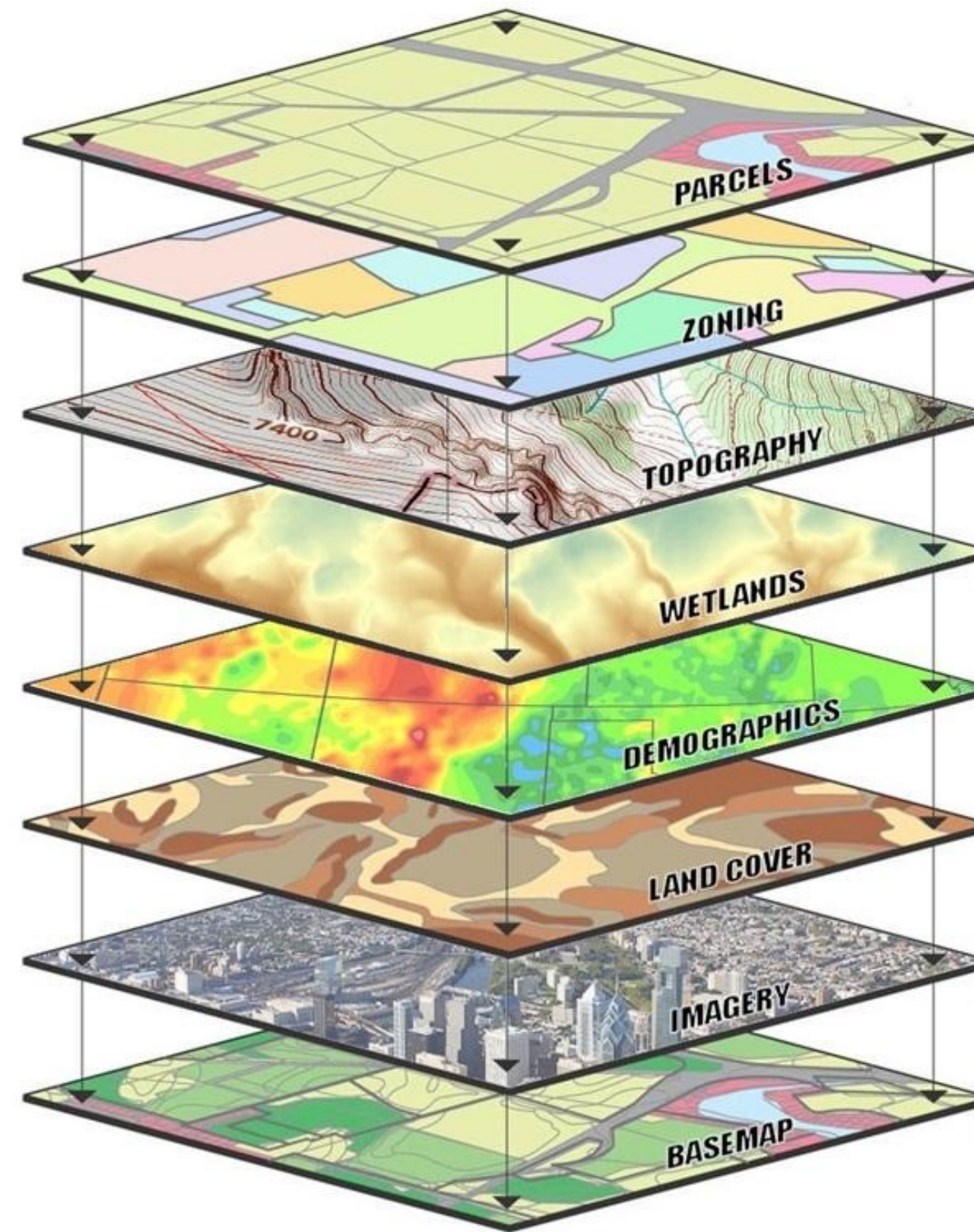
Role of OTI GIS

- Design workflows to produce authoritative, API accessible geodata content that is easily findable from a robust public environment.
- Acquire regular aerial imagery and planimetric data updates
- Support developer use of geodata

Designing data workflows



What data will OTI GIS make available?



What data will OTI GIS make available?



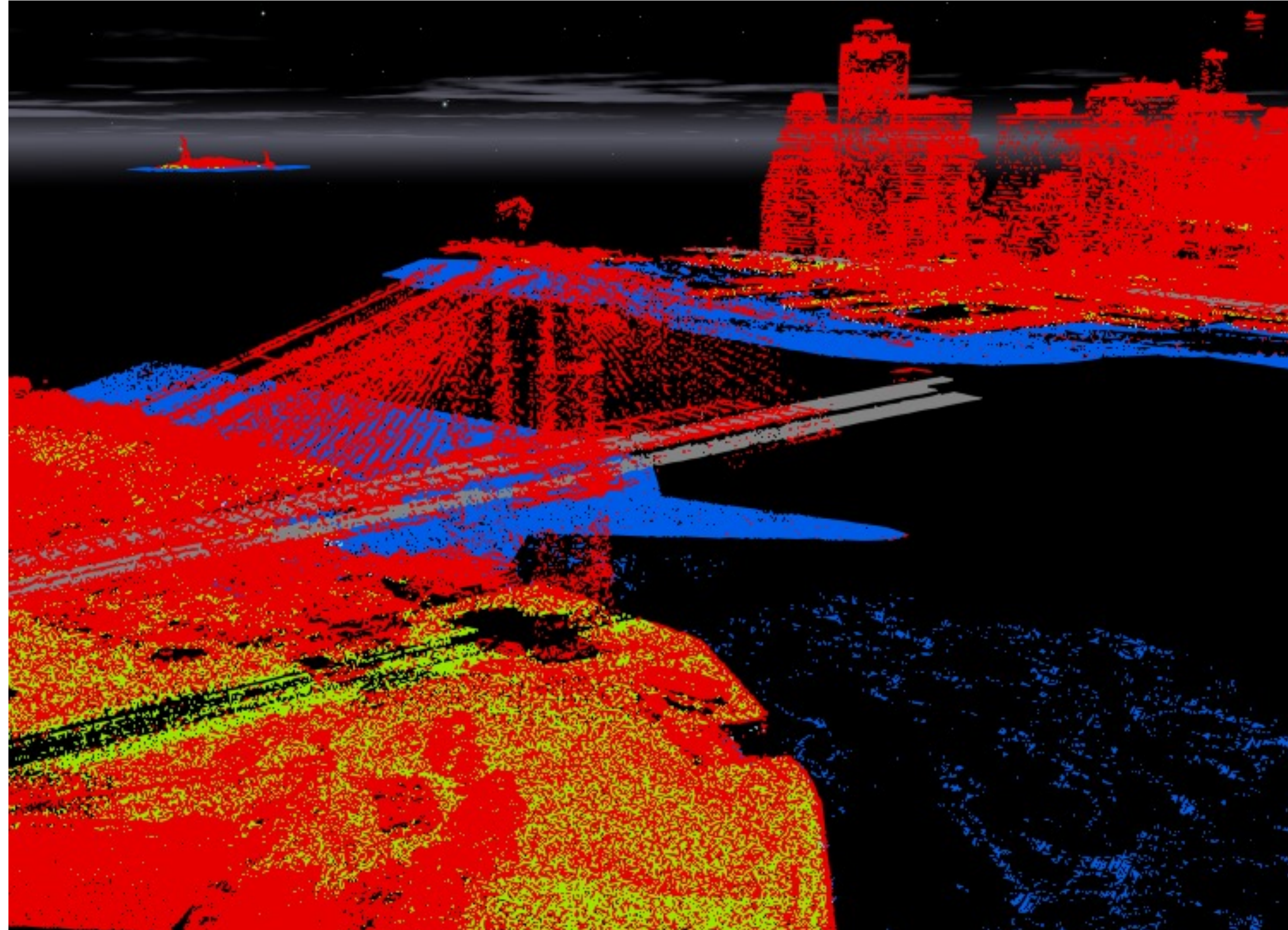
What data will OTI GIS make available?



What data will OTI GIS make available?



What data will OTI GIS make available?

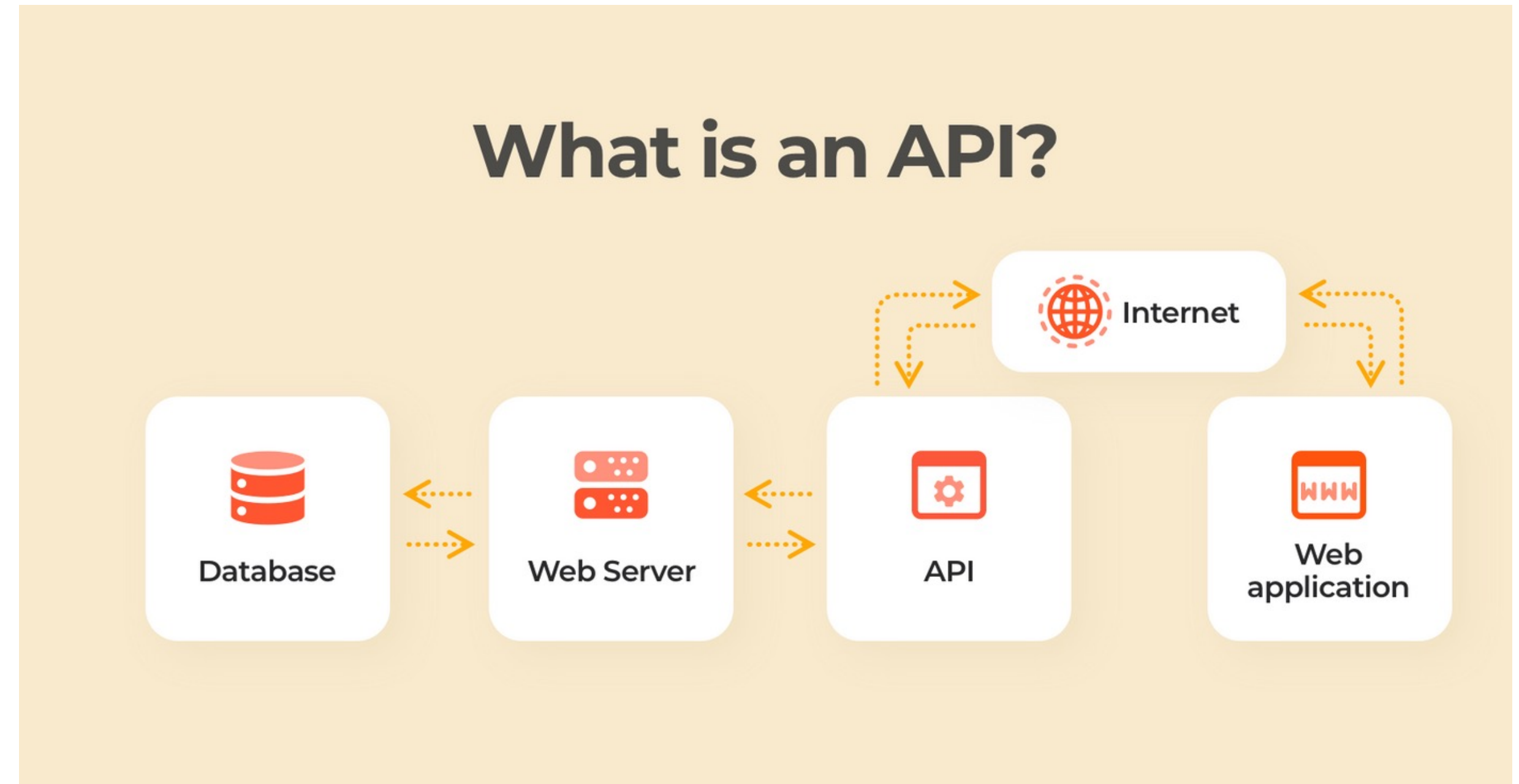


What data will OTI GIS make available?



APIs for everyone!

- Stable, reliable, up-to-date, authoritative, data sources hosted on a robust, redundant environment.
- No more weekly shapefile downloads-unless that's what you want!
- No more sneaker-net data transfer operations!



Find all you need at NYCmaps

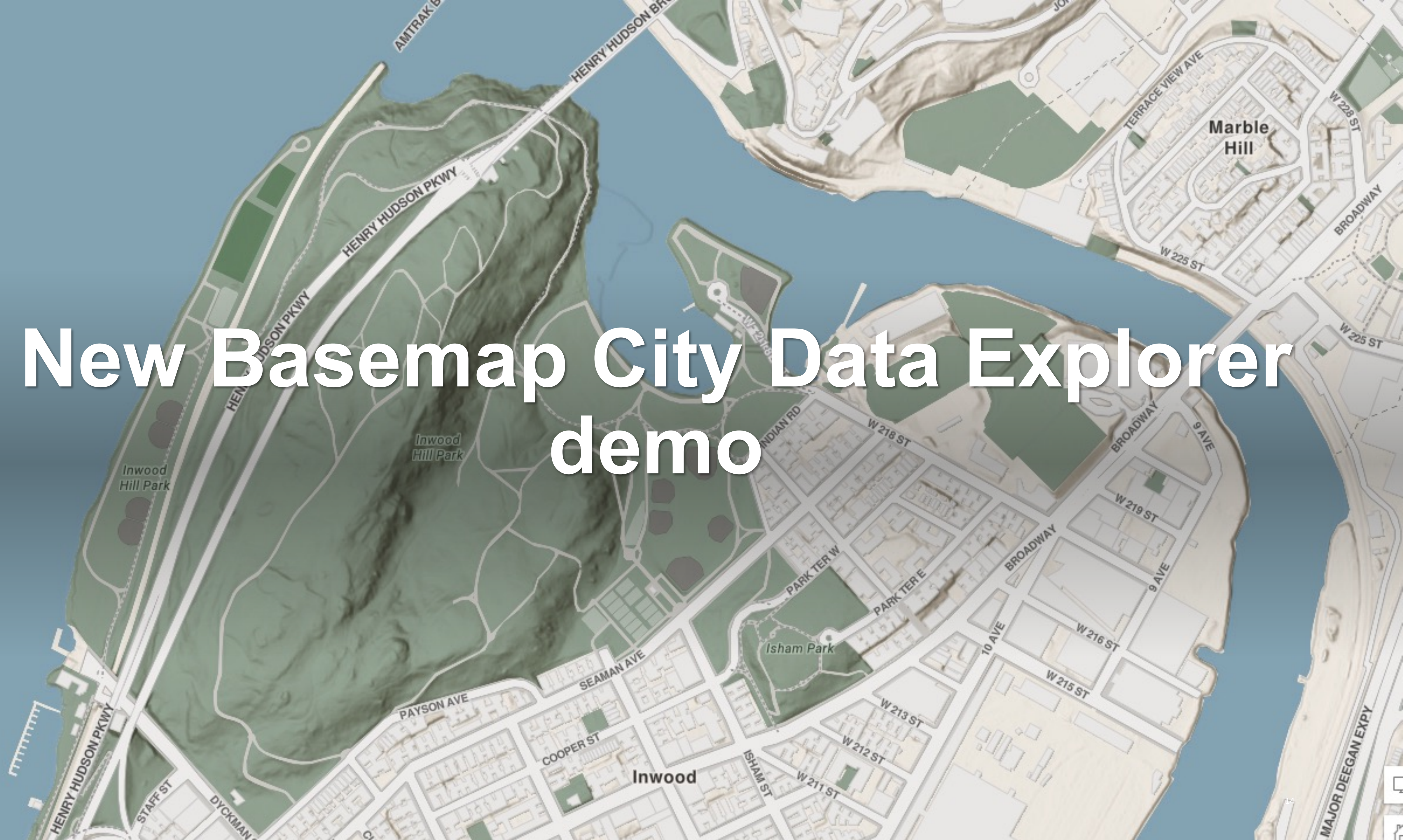
- Authoritative NYC geodata site that is:
 - **Highly Available**
 - **Searchable**
 - **Maintained**
- Authoritative NYC geodata site that has:
 - **Documentation**
 - **Support Resources**
 - **Best Practice Recommendations**



What OTI GIS is working on right now

- Building NYCmaps site
- Setting up data workflows and supporting infrastructure to publish to NYCmaps
- Drafting data governance and metadata standards
- Transitioning from legacy systems and applications

New Basemap City Data Explorer demo



Thanks!

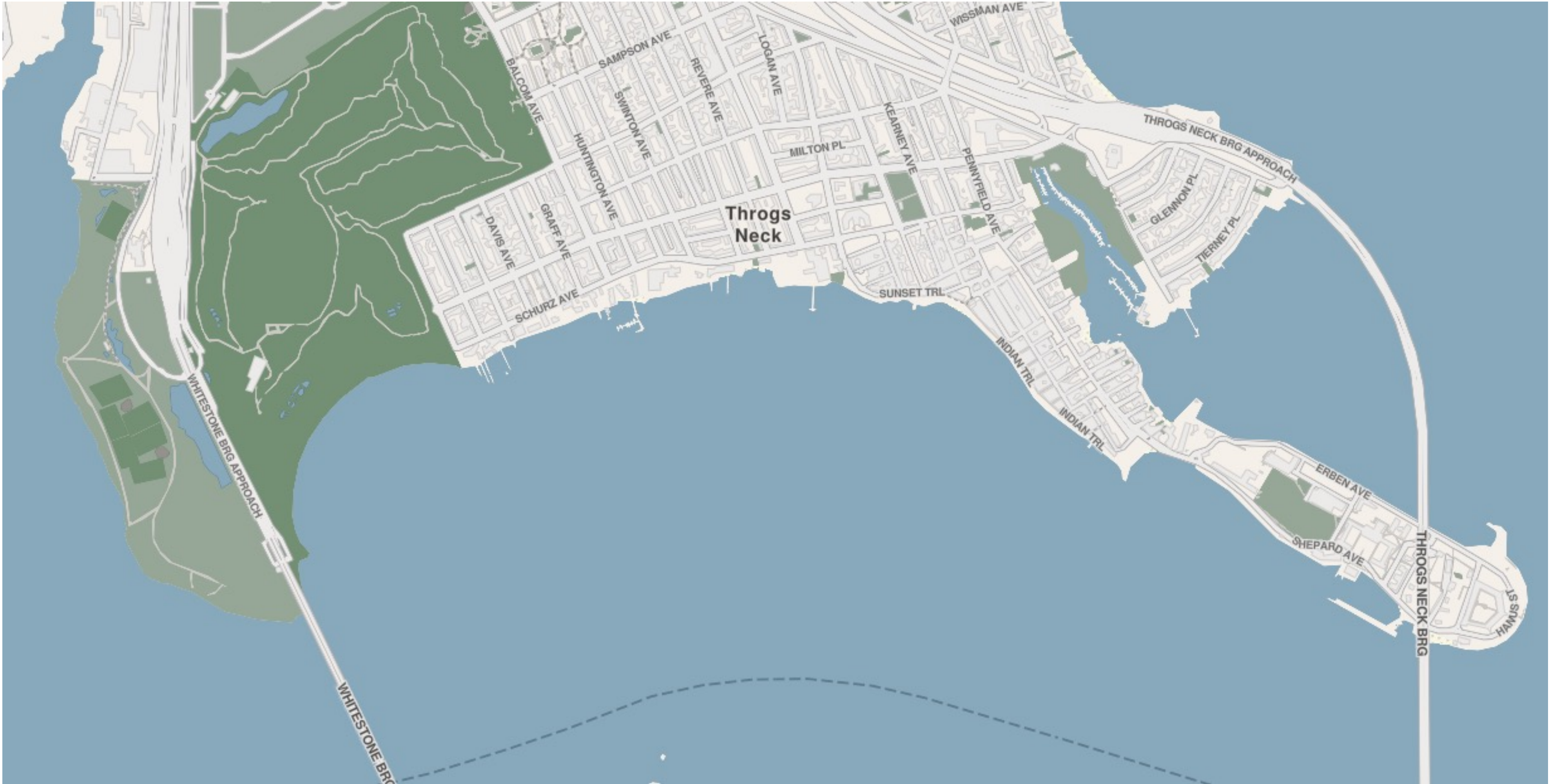
Chris Rado, Director of GIS

chrado@doitt.nyc.gov

Tom Swanson, Executive Director, Citywide GIS

tomswanson@doitt.nyc.gov

New Basemap



New CityMap

